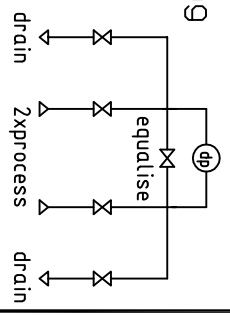


5-valves manifold type SB-5-SFP  
 Connection to transmitter flange  
 A = 54mm  
 inclusive 2x PTFE-seal ring  
 and 4x 7/16" UNF screws  
 Wall or bottom mounting  
 (enclosure system)



Toleranzangaben nach DIN 7168, m

Date	GEZ.	HOOK UP	Drawing:	SB-5-SFP
19.05.17	KH		PROJ.:	
Date	GEZ.			
14.06/14401				
MATERIAL				
MESS-UND REGELTECHNIK				
63857 WALDASCHAFF				
				Maßstab
				1:1

